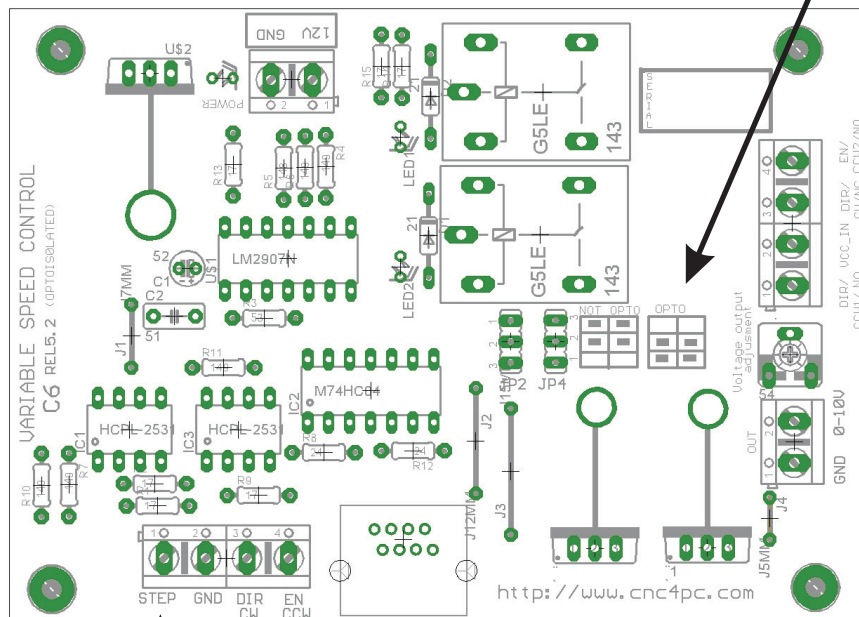


VARIABLE SPEED CONTROL BOARD WIRING GUIDE C6 REV5

POWER:
The requires an external 12VDC@200mA power supply. The ground of this source must be isolated from the input signals and is common with the analog output.

The board could take the power from the Rj45 connector, but will require having optoisolation disabled. The RJ45 connector uses a common ground. This way if using the RJ45 connector and an optoisolated VFD, you could avoid using a isolated power supply by putting the jumpers in the NON-OPTO.



NO connection of relay 2
NC connection of relay 1
VCC_IN of relays 1 and 2
NO connection of relay 1

Analog output:
The 0-10 output comes out through here. This ground is common with the isolated power supply. Use the pot for fine tuning the final voltage.

Frequency in: a 0 to 25 khz frequency is expected here.

RELAYS:
The board has two built in electromechanical relays. One could be used to control the direction and the other one for on/off or enable. If you are using a VFD, you can use one relay to activate CW and the other one to activate CCW.