

CNC⁴PC **USER'S**
Integration Solutions for CNC Projects **MANUAL**
VER.1

**C74 – CONVERTER TO
DIFFERENTIAL Rev. 1.1**



JANUARY, 2017

USER'S MANUAL

TABLE OF CONTENTS

Page #

Contents

1.0 OVERVIEW.....	1
2.0 FEATURES.....	1
3.0 BOARD DESCRIPTION	1
4.0 PINOUT	2
5.0 WIRING DIAGRAMS.....	3
6.0 DIMENSIONS	4

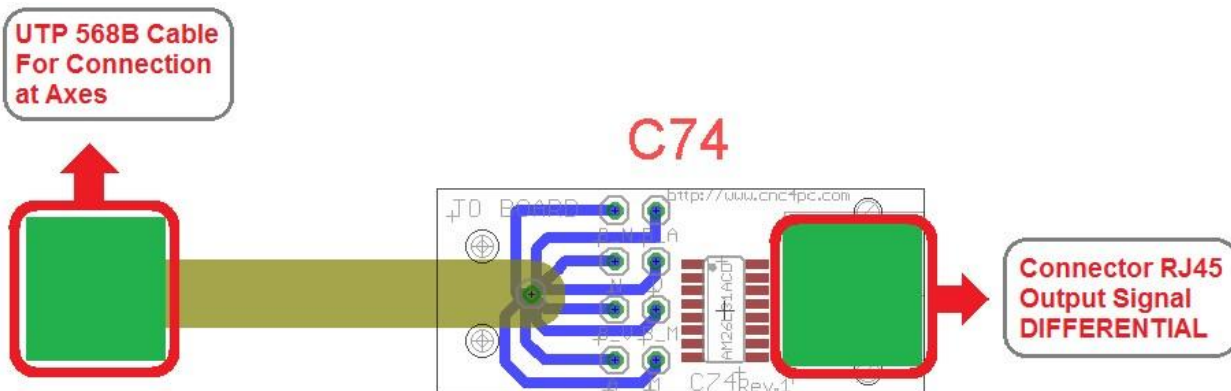
1.0 OVERVIEW

This board converts the output signals (STEP and DIR) to differential.

2.0 FEATURES

- Converts output signal (STEP and DIR) to DIFFERENTIAL.
- RJ45 connectors for easy connection with standard Ethernet cable.
- UTP 568B Cable for Connection at Axes.

3.0 BOARD DESCRIPTION

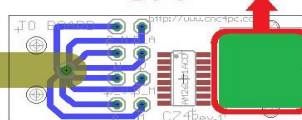
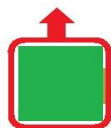


4.0 PINOUT

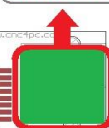
Ethernet Cable

RJ45 INPUT SIGNAL	
RJ45 PIN	Function
1	NOT USED
2	STEP
3	NOT USED
4	GND
5	ERR
6	DIR
7	12V/24V
8	5V

UTP 568B Cable
For Connection
at Axes



Connector RJ45
Output Signal
DIFFERENTIAL

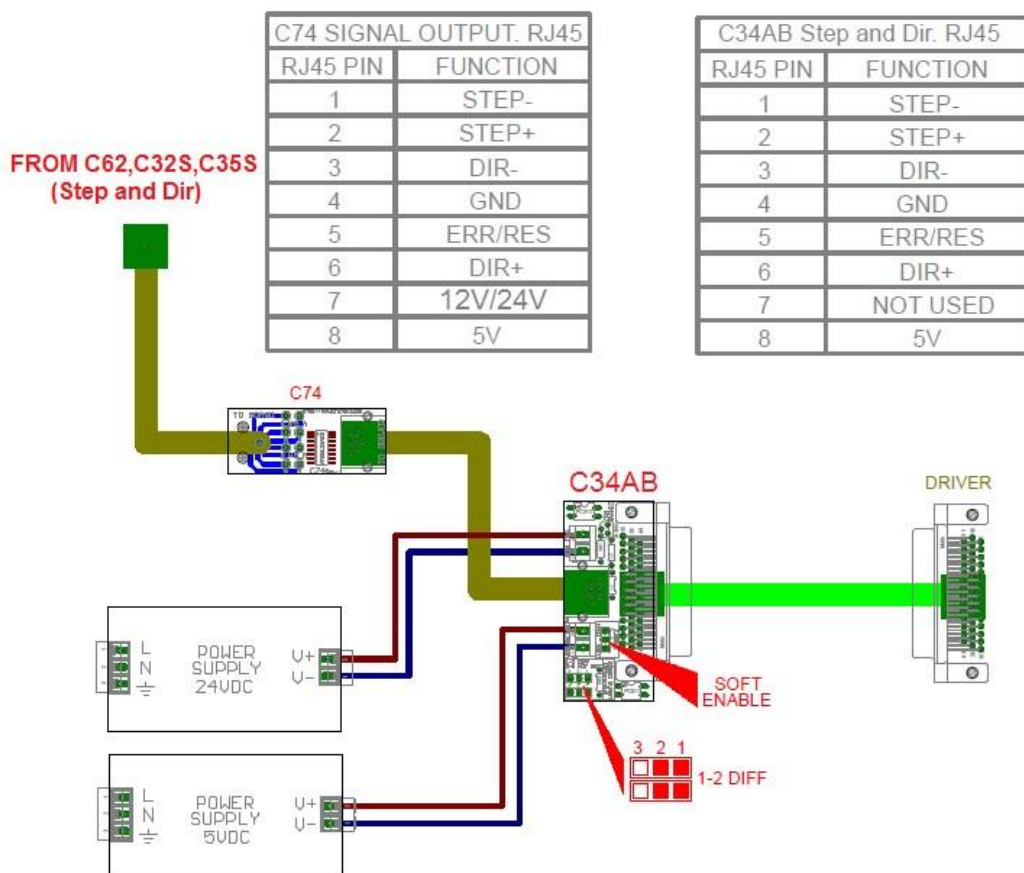


Connector RJ45

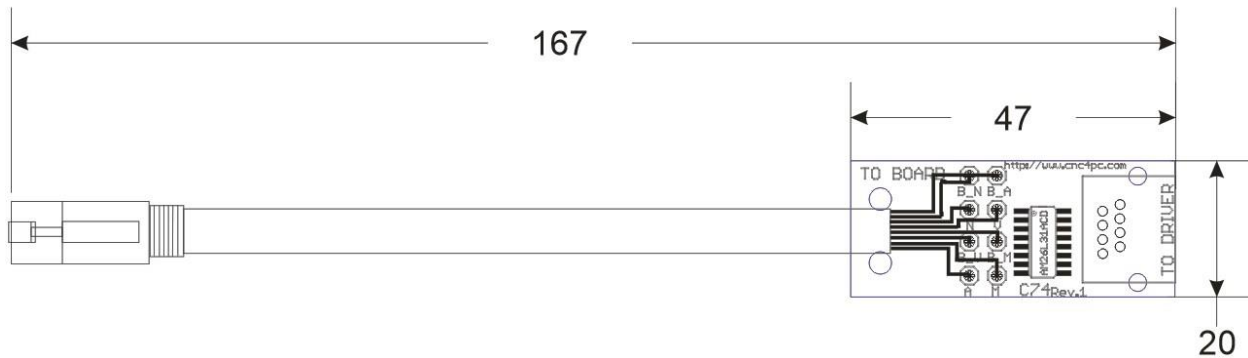
RJ45 OUTPUT SIGNAL	
RJ45 PIN	Function
1	STEP-
2	STEP+
3	DIR-
4	GND
5	ERR
6	DIR+
7	12V/24V
8	5V

The output signals of STEP and DIR are differentials.

5.0 WIRING DIAGRAMS



6.0 DIMENSIONS



All dimensions are in Millimeters.

DISCLAIMER:

Use caution. CNC machines can be dangerous machines. Neither DUNCAN USA, LLC nor Arturo Duncan are liable for any accidents resulting from the improper use of these devices. This product is not a fail-safe device and it should not be used in life support systems or in other devices where its failure or possible erratic operation could cause property damage, bodily injury or loss of life.