

# CNC<sup>4</sup>PC

Integration Solutions for CNC Projects

## USER'S MANUAL VER. 1

### Touch Screen CNC Console Rev. 1



APRIL, 2024

---

## USER'S MANUAL

### CONTENTS

### Page #

<b>1.0</b>	<b>OVERVIEW.....</b>	<b>1</b>
<b>2.0</b>	<b>FEATURES.....</b>	<b>1</b>
<b>3.0</b>	<b>DIMENTIONS.....</b>	<b>2</b>

---

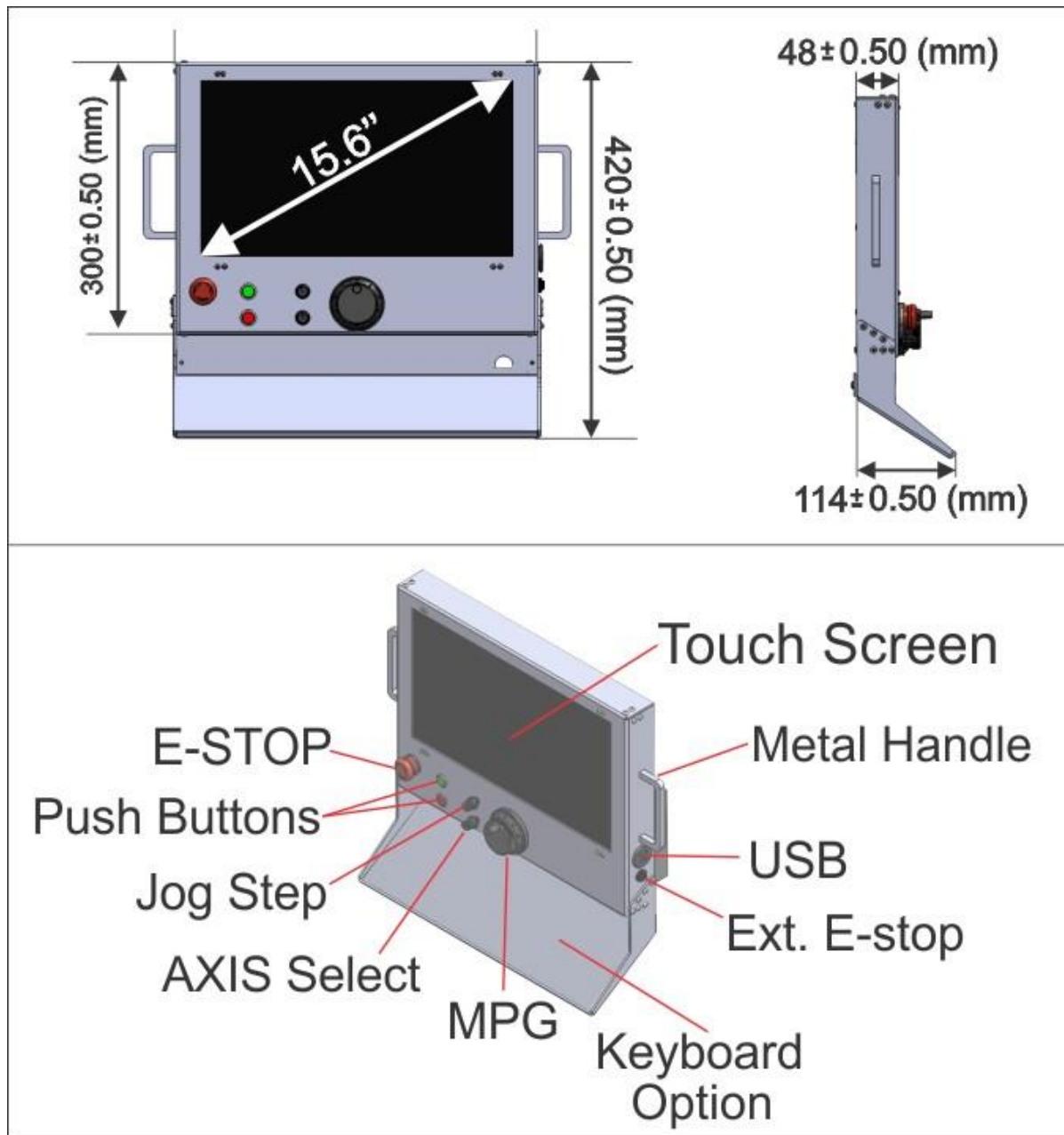
## **1.0 OVERVIEW**

This compact CNC Console with advanced and sleek design.

## **2.0 FEATURES**

- 15.6" Touch Screen.
- PC can mount on the back.
- 2 USB Plugs on the side.
- MPG with axis and resolution selection buttons.
- Illuminated cycle start and Feed hold buttons.
- E-Stop button.
- E-Stop output connector to integrate with e-stop on the control box.
- MPG code for Mach3, Mach4, and UCCNC.
- Powder Coated Aluminum enclosure.
- Light weight 8lbs,
- Standard 100mm VESA Mount, so it works with popular VESA mounts and stands.

### 3.0 DIMENSIONS



#### Disclaimer:

Use caution. CNC machines can be dangerous machines. Neither IgniteCNC LLC nor Arturo Duncan is liable for any accidents resulting from the improper use of these devices. This product is not a fail-safe device and it should not be used in life support systems or in other devices where its failure or possible erratic operation could cause property damage, bodily injury or loss of life.